



Discovery
Center

2010 – 2011
Education Resource Guide

Contents



2	Message from DCS Education Director	12-13	Distance Learning <i>"DCS Is Going The Distance" Educational programs via video conferencing</i>
3	Discovery Center Facts	14-15	Homeschool, Scouts, Community Groups
4-5	Programs at a Glance	16	Special Events <i>Educational Days</i>
6-9	Outreach <i>We will come to you!</i>	17	Traveling Exhibits <i>What's NEW in 2011</i>
10-11	Science Sprouts <i>Young learners up to age 6</i>	18-19	Field Trips

A Message From DCS Education Director



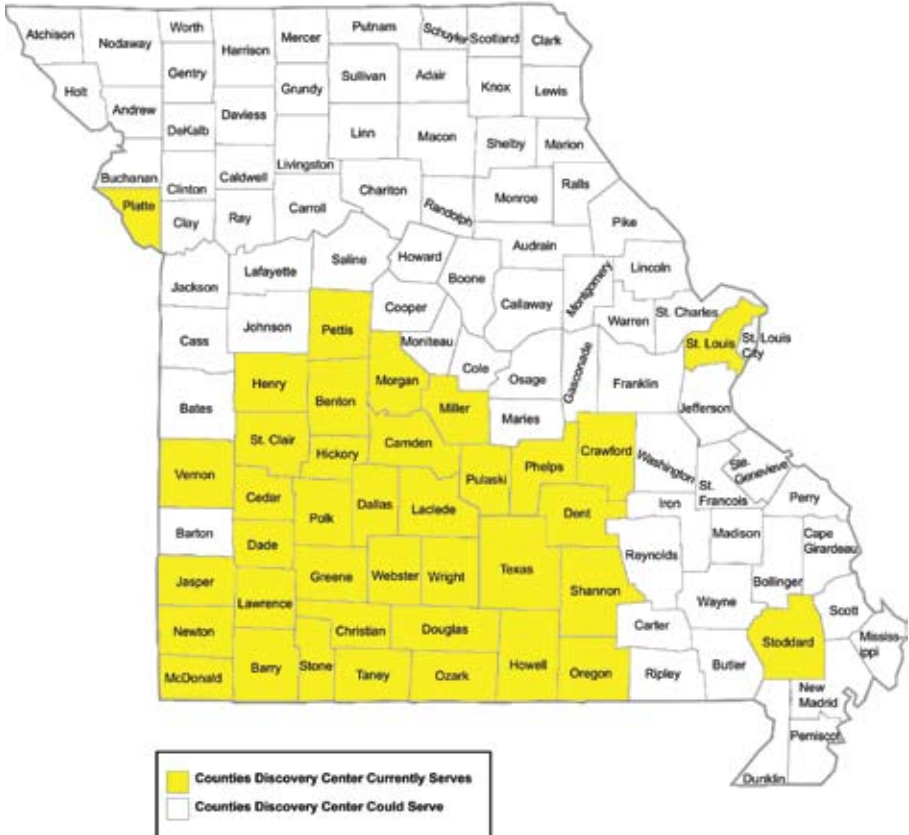
From communicating by morse code to communicating by text messaging, advances in science and technology have transformed daily life! New discoveries occur on a daily basis, and it's hard for any one person to keep pace! The students in your classrooms are the physicians, engineers, bio-medical researchers or environmental chemists of the future. Discovery Center of Springfield exists to serve as a resource for you, the classroom teacher, as a tool for helping meet not only grade level expectations in science, but also to light a spark of excitement in your

students for science learning. In addition to being a field trip destination, we have a wealth of programs that we can bring to your school site...and a team of highly qualified educators skilled in providing inquiry learning techniques, hands-on science experiences, and content expertise. We hope this school year is one of your best—and that you seek out Discovery Center science resources to help you ignite the spark of science learning for the next generation!

Laurie Duncan

Discovery Center Facts

Counties Discovery Center Currently Serves



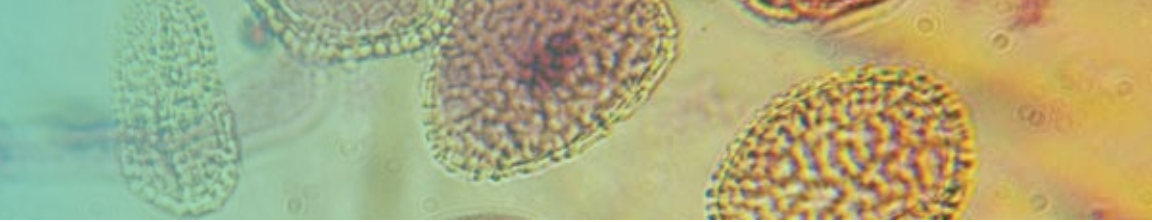
Facts

- Discovery Center of Springfield has been Southwest Missouri’s primary science resource facility since January 1998.
- Since 2002, Discovery Center of Springfield’s Outreach programs have delivered hands-on, highly interactive, GLE aligned science content lessons to over 39,000 students in the surrounding region.
- Discovery Center educators hold a bachelor’s degree or higher in a science field.
- Discovery Center has over 20 different programs that can be delivered to classrooms within a 2-hour driving radius.
- From age 4 to adult, we’ve got a science program that meets your needs!
- Discovery Center uses video conferencing technology to deliver hands-on science to students in 33 states, plus the countries of Mexico, Canada and Australia!



Programs At a Glance

P#	PROGRAM TITLE	PRE K	K	1	2	3	4	5	6-8	9-12
SCIENCEWORKS ON THE ROAD OUTREACH PROGRAMS										
8	MAGNET MANIA		•	•	•	•				
8	MATTER MATTERS	•	•	•	•	•	•	•	•	•
8	SENSE-SATIONAL			•	•					
8	GERMS & MORE			•	•					
8	ECOLOGY EXPLORATIONS			•	•	•	•	•	•	
8	ASTRONOMY ABOUND					•	•	•	•	
8	MOVE IT					•	•			
8	POWER ME					•	•			
8	SIMPLE MACHINES					•	•	•		
8	GEOLOGY ROCKS					•	•	•	•	
8	CHOPSTICK CHINA					•	•	•	•	
8	MAGNIFICO MEXICO					•	•	•	•	
8	PERUSE PERU					•	•	•	•	
8	JUMP INTO JAPAN					•	•	•	•	
8	CHEMISTRY CAPERS					•	•	•	•	
8	BATTERIES NOT INCLUDED							•	•	
9	BLOOD & GUTS					•	•	•	•	
9	GENE SCENE								•	•
9	INVENTOR'S WORKSHOP				•	•	•	•	•	
9	ELECTRICITY EXPLORATION					•	•	•	•	
9	EXPERIMENTING WITH ENERGY			•	•	•	•	•	•	
9	WEATHER WATCHERS			•	•	•	•	•	•	
9	TINY TECHNOLOGY			•	•	•	•	•	•	
9	TECHNOLOGY & THE SCIENTIFIC METHOD			•	•	•	•	•	•	
9	DIGGING INTO FOSSILS				•	•	•	•	•	
SCIENCE SPROUTS PROGRAMS										
10	STORYBOOK SCIENCE <i>STELLALUNA</i>	•								
10	STORYBOOK SCIENCE <i>DINOSAURUMBUS</i>	•								
10	STORYBOOK SCIENCE <i>THE VERY HUNGRY CATERPILLAR</i>	•								
10	STORYBOOK SCIENCE <i>MARS NEEDS MOMS</i>	•								
10	STORYBOOK SCIENCE <i>ONE BEAN</i>	•								
10	MY AMAZING BODY	•								
10	IT'S RAINING! IT'S POURING!	•								
10	LIGHTS OUT!	•								
10	GOOPY, SLIMY, BUBBLY STUFF	•								



P#	PROGRAM TITLE	PRE	K	1	2	3	4	5	6-8	9-12
DISTANCE LEARNING										
12	ANIMAL AWARENESS		•	•	•	•				
12	ANIMAL FAMILIES		•	•	•	•				
12	YOUR WILD BACKYARD			•	•	•	•	•		
12	ALL ABOUT BIRDS! ALL ABOUT REPTILES! ALL ABOUT MAMMALS!				•	•	•	•		
12	LES ANIMAUX EN FRANÇAIS				•	•	•	•	•	•
12	ENDANGERED ANIMALS							•	•	•
12	JUMP INTO JAPAN						•	•	•	•
12	MAGNIFICO MEXICO						•	•	•	•
12	CHOPSTICK CHINA						•	•	•	•
12	PERUSE PERU						•	•	•	•
12	ASTRONOMY ABOUND						•	•	•	
13	GEOLOGY ROCKS						•	•	•	•
13	BUGS? INSECTS?	•	•	•						
13	NATIVE AMERICAN USE OF THE BISON		•	•	•	•	•	•	•	•
13	ECOLOGY EXPLORATIONS				•	•	•	•	•	
13	MAGNET MANIA				•	•	•	•	•	
13	CHEMISTRY CAPERS					•	•	•	•	
13	SIMPLY MARVELOUS MACHINES					•	•	•	•	
13	BRIDGING FORCES						•	•	•	
13	MY AMAZING BODY	•	•	•	•					
13	BON APPÉTIT						•	•	•	•
13	GENE SCENE								•	•
FIELD TRIPS PROGRAMS										
18	MY AMAZING BODY	•	•	•	•					
18	STORYBOOK SCIENCE	•	•							
18	MAGNET MANIA		•	•	•	•				
18	MATTER MATTERS	•	•	•	•	•	•	•	•	•
18	ECOLOGY EXPLORATIONS			•	•	•	•	•	•	
18	ASTRONOMY ABOUND		•	•	•	•	•			
18	CHEMISTRY CAPERS					•	•	•	•	
18	GEOGRAPHY OF CULTURE					•	•	•	•	
18	HOMES AROUND THE WORLD		•	•	•					
18	GENE SCENE								•	•



ScienceWorks on the Road



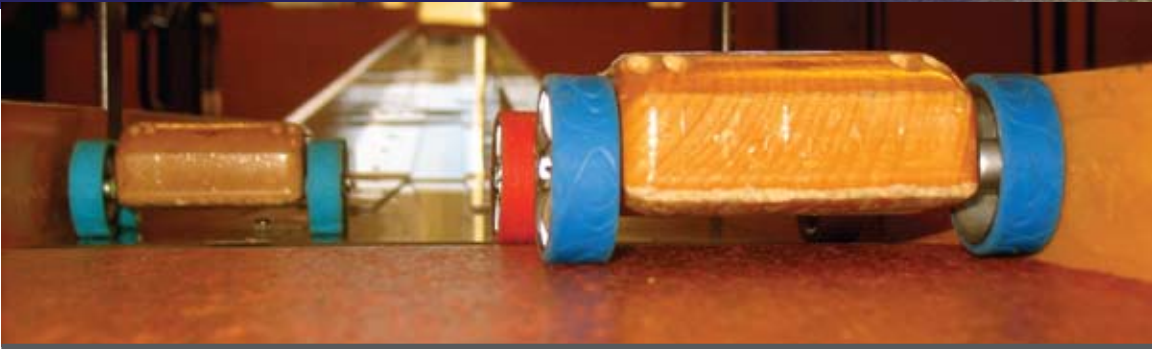
ScienceWorks on the Road 8-Week Program

Discovery Center's ScienceWorks on the Road program increases students' science knowledge and exposure to hands-on science experiments, assists classroom teachers, helps prepare students for the MAP test, and creates long-lasting energy and excitement for science. This is your opportunity to receive on-site professional development plus the best in hands-on education for your students. All topics are correlated to the Missouri Grade Level Expectations in Science.

We come to your classroom for one hour per week for 7 weeks. During the 8th week, we arrange a field trip featuring a "science hunt" at the Center, enabling the children to apply all they have learned to everyday life through our innovative exhibits. Over 9,000 students in the Southwest Missouri region have benefited from this program. Schools that have participated in this program had an average of 57% of 5th grade students score proficient or advanced on the 2010 science MAP test.



8-week Outreach Programs



8-Week Program Topics

3rd Grade

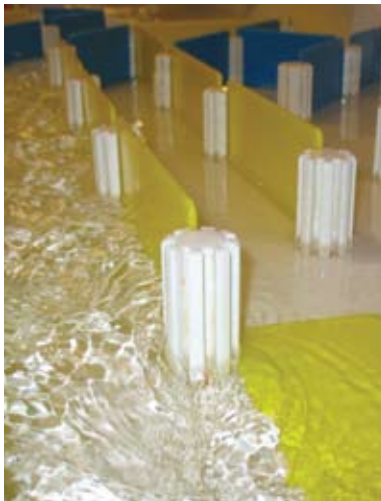
Week 1	Electricity and Magnetism
Week 2 & 3	Choose Ecology, Earth Science, Weather, or Simple Machines
Week 4	Energy
Week 5	Matter
Week 6	Chemistry
Week 7	Astronomy
Week 8	Field trip to Discovery Center

5th Grade

Week 1	Zoology
Week 2	Choose Weather, Tiny Technology, or Technology & the Scientific Method
Week 3	Astronomy
Week 4	Energy
Week 5	Electricity
Week 6	Simple Machines Part 1
Week 7	Simple Machines Part 2
Week 8	Field trip to Discovery Center



Approximate fees for this program average \$13.75 per student for the 8-week program. Additional mileage fees may apply, based on distance. For a detailed quote please call Program Facilitator Megan West, 417 862-9910, x726 or email mwest@discoverycenter.org.

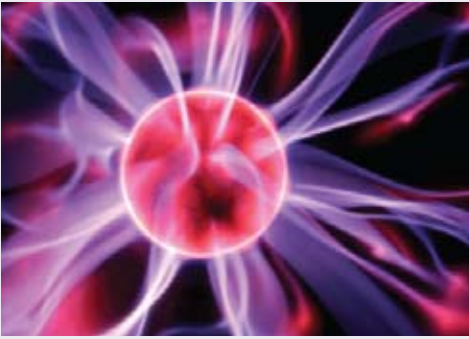


ScienceWorks on the Road

Single Program Topics

From matter to energy, Discovery Center has a program to fit a variety of science or culture content needs! Each program is one hour and can accommodate 30 students per program. Additional presentations of the same topic can be delivered on the same day up to 3 additional times.

1-Time Program Topics



Magnet Mania Uncover the attractive properties of magnets and static electricity. (Gr K-3)

Matter Matters Explore fun experiments with various states of matter. (Gr Pre K–12)

Sense-Sational Sniff out information about our 5 senses. (Gr 1-2)

Germ & More Discover the world of microorganisms, plus tips for healthy hygiene. (Gr 1-2)

Ecology Explorations Investigate physical characteristics of animals within their environments. (Gr.1-3: focuses on food chains and adaptations. Gr. 4-6: focuses on classification.)

Astronomy Abounds Explore our closest neighbors in space as students build a model of our solar system using amazing facts about our sun, the planets, and their moons. (Gr 3-6)

Move It! March through a muscular and skeletal systems lesson. (Gr 3-4)

Power Me Explore the cardiovascular and respiratory systems. (Gr 3-4)

Simple Machines Discover the different ways simple machines help us do work. (Gr 3-5)

Geology Rocks Find out where rocks and minerals come from and explore their many-thousand uses. (Gr 3-8)

Chopstick China Observe how geography influences population distribution and cultural activities in the world's most populated country. (Gr 3-8)

Magnifico Mexico Compare and contrast Mexico's culture and traditions with those of the United States, and bust some common myths about Mexican holidays. (Gr 3-8)

Peruse Peru Take a peek into the fascinating (and shocking!) world of the ancient Incas. (Gr 3-8)

Jump into Japan Examine how geography, natural resources, and history influence modern Japanese celebrations. (Gr 3-8)

Chemistry Capers Bubbling, melting, color changing: is it a physical or chemical change? Explore and find out! (Gr 3-8)

Batteries Not Included Trace the digestion process and learn about the importance of nutrition. (Gr 5-6)

1-time Visit Outreach

Blood & Guts Examine your “insides” —you choose the theme: heart & lungs, bones & muscles, brain & nervous system, or eyes. Heart, eye, or brain dissection available. Extra fee applies. (Gr 3-8)

The Gene Scene Investigate basic cell biology and the complexities of DNA using innovative activities developed by the National Human Genome Research Institute. DNA—see it, build it, touch it! (Gr 6-12)

Inventor’s Workshop Inventing—what a process! Learn some of the steps inventors use to plan, develop and create something new! Inquiry strategies are at the heart of this program! (Gr 2-8)

Electricity Exploration Build simple circuits and explore the properties of insulators and conductors as we discover what causes our very favorite form of energy! (Gr 3-6)

NEW For 2010–2011

Experimenting with Energy

What makes your muscles move, your car drive, and your TV turn on? Energy! Explore the 7 main types of energy and how they work together to make things happen! (Gr 1-6)

Weather Watchers Investigate where weather comes from and how important weather is to our planet! (Gr 1-6)

Tiny Technology

What is one billionth of a meter? Possibly a cure for cancer! Explore amazing new discoveries being found at the nano level! (Gr 4-8)



Technology & the Scientific Method

Follow the steps to complete a true science experiment and discover how technology has helped scientific advances along the way. (Gr 4-8)

Digging Into Fossils Become a paleontologist as you discover the amazing world of fossils, including how to find them, where to look, and what we can learn about ancient plant and animal life. (Gr. 2-8)



- \$100 for 1st program
- \$75 per repeated program up to 3 repeats
- Additional supply & mileage fees may apply

For a detailed quote please call Program Facilitator Megan West, 417 862-9910, x726 or email mwest@discoverycenter.org



Science Sprouts

Discovery Center is planting seeds of science to help early learners grow!



Science
Sprouts



Science Sprouts Outreach-Early Learners

We offer nine 45-minute one-time outreach programs designed specifically for early learners age 4-6. Let us bring hands-on experiments to your classroom to help you enrich the science learning experiences of your preschool aged children.

Program Topics

Storybook Science:

Bats combines hands-on activities with the book *Stellaluna* by Janell Cannon to explore the unique characteristics of bats.

Dinosaurs invites you to join in a *Dinosaurumpus!* We will investigate the dinosaurs found in this favorite children's book by Tony Mitton.

Insects uses *The Very Hungry Caterpillar* by Eric Carle to explore the world of our six-legged friends.

Mars introduces young astronauts to our solar "neighbor," the red planet by using *Mars Needs Moms* by Berkley Breathed.

Plants helps students learn about how plants grow & parts of a plant with *One Bean* by Ann Rockwell

My Amazing Body

Introduces bones, muscles, heart, lungs and healthy habits to early learners.

It's Raining! It's Pouring!

Travel the life of a water droplet on its adventure through the water cycle.

Lights Out!

Learn about the crazy properties of light while experimenting with mirrors and making rainbows.

Goopy, Slimy, Bubbly Stuff

Perfect for the beginning chemist. Learn how to mix, measure and make careful observations as we create goopy, slimy and bubbly stuff.



- \$100 for 1st program
- \$75 per repeated program up to 3 repeats
- Additional supply & mileage fees may apply

For a detailed quote please call Program Facilitator Megan West, 417 862-9910, x726 or email mwest@discoverycenter.org



Science Sprouts Museum Days

Visit the museum with your early learner without fear of being over-run by hordes of older children. On Science Sprout Museum Days, Discovery Center staff will not schedule any field trips for groups over age 6. So you and your young scientists will be able to explore, discover & enjoy the museum surrounded by other young scientists! Special science demonstrations, science story times and hands-on experiences will be available each day. Come back often, there's a different topic each month from September–February. General admission applies.

Dates & Topics

- 09.17.10 **Are You My Mummy?**
An Egyptian Extravaganza
Kick-Off Event
- 10.15.10 **Hooray For Planet Earth**
- 11.19.10 **Magical Magnets**
- 12.17.10 **Light**
- 01.21.11 **Amazing Bodies**
- 02.18.11 **I'm An Engineer**

Presented by



To Schedule a Group:



- Group rates available for 12+
- Schedule 7 days in advance

Download reservation form
www.discoverycenter.org

For a detailed quote please call
Program Facilitator Megan West,
417 862-9910, x726 or email
mwest@discoverycenter.org

Perfect for MOPS groups, play
groups & Pre K groups!



Distance Learning

Discovery Center currently offers a variety of Distance Learning programs via video conferencing, developed to support the Missouri GLEs and the National Science Standards. Discovery Center's electronic field trips enable your class to have a hands-on lesson taught by a science specialist.

A kit of manipulatives provided to the classroom teacher includes curriculum, pre and post labs, and links to websites.

FREE Faculty Presentations—Gather your faculty together and join us for a 30 minute overview of our Distance Learning programs. IT'S **FREE!** We will demonstrate some of the pre-lab, video conference lab, and post-lab activities for the various programs, and answer your questions.

Program Topics

Animal Awareness Learn about the characteristics of mammals, birds, and reptiles, as we compare and contrast these animals. We'll discuss traits as modeled by our live zoo animals. (Gr Pre K-2)

Animal Families Learn about family groups and how animals raise their young. (Gr Pre K-2)

Your Wild Backyard Our backyards play an important role in conserving nature. Learn about the animals in your backyard, how to attract them, and how to build a healthy backyard habitat. (Gr Pre K-5)

All About Birds! All About Reptiles! All About Mammals! Choose one of these 3 programs to learn about an animal family by meeting some of the Zoo's live birds, reptiles, or mammals. (Gr 1-5)

Les Animaux en Français Learn about animals and their habitats while expanding your French vocabulary. (Gr 2-12)

Endangered Animals Find out why some animals' existence is threatened and what we can do to stop animal extinction. (Gr 5-12)

Jump into Japan Learn how geography influences population distribution, economics, and the culture of this island nation. Examine how history and natural resources influence holidays and festivals throughout Japan. (Gr 3-8)

Magnifico Mexico Even though Mexico is located just south of the United States, the two countries couldn't be farther apart in geography, history, and culture. Learn how these elements influence traditions and unearth some common misconceptions about Mexican holidays. (Gr. 3-8)

Chopstick China China is approximately the same size as the United States, but has more than 4 times the population. Learn how the diverse geography of this country influences the cultural activities of those who live there. (Gr 3-8)

Peruse Peru Investigate the fascinating, unusual, and perhaps shocking way of life of the ancient Inca people. Explore mountaintop cities, ancient technologies, and bizarre rituals of this pre-Columbian culture. (Gr 3-8)

Astronomy Abounds Compare and contrast characteristics of the planets in our solar system. (Gr 4-8)

These programs presented in
Partnership with the
Dickerson Park Zoo.



Geology Rocks How do rocks form? This interactive program will allow the students to classify rocks, talk about the rock cycle, and how rocks change over time. Learn the difference between rocks and minerals. Students will even make a rock they can eat! (Gr 3-6)

Bugs? Insects? What do we call them? Learn the difference between bugs and insects. The Very Hungry Caterpillar will be read in a whole new way. New science words will be introduced when talking about the changes “bugs” go through. (Gr Pre K-1)

Native American Use of the Bison Bison were critical for the survival and well being of the many tribes of the Great Plains. Learn how Native Americans used the bison to make shovels, thread, glue and much more. (Gr K-12)

Ecology Explorations Find the connections in a food web! Dissect an owl pellet to investigate its eating habits. Identify adaptations of predators and prey and explore concepts in population control. Additional owl pellets available \$1 per pellet. (Gr 2-3 or 4-8)

Magnet Mania Explore the movement of electrons, electricity, magnetism, and the exciting world of electromagnetism! (Gr 2-3 or 4-8)

Chemistry Capers* Create a polymer, and identify physical and chemical reactions. Using the scientific method, design your own experiment, and test the causes of chemical changes in “Chemistry in a Baggie”. (Gr 3-9)

Simply Marvelous Machines Investigate the quantitative advantages of levers, inclined planes, gears, and pulleys. (Gr 3-6)

Bridging Forces Calling all engineers and builders . . . investigate different forces and structural designs; build a warbler structure to explore center of gravity and stability. Design and build a structure with magnetic balls and rods – how many books will it support? (Gr 4-8)

My Amazing Body Our body parts are so amazing! In this interactive program, we’ll touch on bones, brains, muscles and more as young learners explore human anatomy and healthy habits. *Also available en español!* (Gr Pre K-2)

Bon Appétit Students trace the path of the digestive system and explore macronutrient (carbohydrates, proteins, and fats) chemistry through interactive kitchen-chemistry experiments. (Gr 3-6)

Gene Scene* Students investigate cell processes and genetics using innovative DNA activities developed by the National Human Genome Research Institute. DNA. See it, build it, touch it! (Gr 7-12)

*Additional Supply Fee: \$30 per program.



- All programs \$165 per 1-hour video conference
- Classes book 3 weeks in advance
- Additional fee for international shipping \$25

For a detailed quote please call Program Facilitator Megan West, 417 862-9910, x726 or email mwest@discoverycenter.org



Homeschool • Scouts

Homeschool Opportunities

Homeschool families—we have a variety of options available to support the science instruction you offer at home! Consider the following resources we have available:

Museum Exploration

The variety of content and concepts in our galleries makes a visit to DCS the perfect enhancement for your science curriculum. Enhance your museum visit even further by visiting during one of our special event days scheduled throughout the year—Nano Day, DNA, pi, astronomy, the environment, culture...and more!

Go to discoverycenter.org to join our email list and get monthly updates!

Discovery Science Club

Designed for parents and children to attend as a learning team! September—March, but skipping December, come explore a different topic each month! Each 2-hour class is taught by one of our DCS educators, and will include a variety of experiments, projects, and learning adventures! Attend 1 or all 6! Download registration form online.

Outreach

We can come to your Co-op! We have over 20 different programs we can bring to your group for a nominal fee. Call Laurie Duncan 862.9910 x701 for details.

Scout Badge Programs

Schedule Anytime!

Daisies	Learning Petals Bridging Activities
Brownies	Science in Action Science Wonders Healthy Habits My Body
Juniors	Making it Matter Science Discovery Highway to Health Fun & Fit
Webelos & Cub Scouts	Scientist • Engineer Geologist • Astronomy

Scout Nights at the Museum!

Explore the museum after hours!

Cub Scout Night

January 29, 2011 6:30-9:30pm

Activity stations available to support a variety of achievements and badge requirements. No pre-registration required for Cub Scout Night at the Museum! Non member: Scouts \$10, Adults \$5; Member: Scouts \$5, Adults Free

Girl Scout Night Begins 8pm

02/04/11—ends 8am 02/05/11

For Brownies and Jrs.—spend a night at DCS! Event. Explore the museum, activity stations, and a movie. Pre-registration required through Girl Scouts of Missouri Heartland. Space is limited—register early!



For a detailed quote please call Program Facilitator Megan West, 417 862-9910, x726 or email mwest@discoverycenter.org



• Community Groups

ASSEMBLIES!

If you've got a large group, we've got the science! Choose from:
Insects (K-2) • Astronomy (K-5) • Splash of Science (K-5) • MegaMatter (K-12)
For more information email mwest@discoverycenter.org or 862-9910 x726



Science Mania at Jump Mania in Springfield!

Discovery Center is partnering with Jump Mania to bring you educational science workshops that will help you "jump start" both your science and physical fitness experiences for your students! Now you can build a field trip for your Pre K through 6th grade students that combines educational value with exercise! A variety of 30 minute science or culture programs are available, and can be combined with Jump Mania time. A variety of package options are available. Visit www.discoverycenter.org to see a list of programs and prices.



For a detailed quote please call Program Facilitator Megan West, 417 862-9910, x726 or email mwest@discoverycenter.org

discoverycenter.org



Great
Minds
at
Play!

417 862-9910

15

Special Events



September 2010

- 6-10 **DCS Closed**
- 10 **Teacher Appreciation**
4-7pm
- 12 **Grandparents Day**
1-5pm
- 17 **Science Sprouts Day Kick Off!**
9am-6pm
Are You My Mummy?
Ancient Egypt
Sponsored by Children's Orchard
- 18 **Discovery Science Club***
10am-12pm
Topic: Egyptian Explorations

October 2010

- 9 **Robot Workshop***
10am-12pm
- 10 **Powers of 10 Day**
10/10/10 • 1-5pm
- 15 **Science Sprouts**
9am-6pm
Hooray for Planet Earth!
- 16 **Discovery Science Club***
10am-12pm
Topic: Astronomy



- 29 **Halloween Night at the Museum**
6:30-9:30pm
- 31 **Dia de los Muertos**
1-5pm

November 2010

- 13 **America Recycles**
9am-6pm
Discovery Science Club*
10am-12pm
Topic: Going Green
- 19 **Science Sprouts Day**
9am-6pm
Magical Magnets



December 2010

- 17 **Science Sprouts Day**
9am-6pm
Light

January 2011

- 8 **Robot Workshop ***
10am-12pm
- 17 **Martin Luther King Jr. Day**
DCS OPEN!
9am-5pm
- 21 **Science Sprouts Day**
9am-6pm
Amazing Bodies
- 22 **Discovery Science Club***
10am-12pm
Topic: Healthy You!
- 29 **Cub Scout Night at the Museum**
6:30-9:30pm
- 30 **Chinese New Year**
1-5pm
Year of the Rabbit

February 2011

- 4-5 **Girl Scout Camp-In***
8pm-8am
Brownies & Juniors register- Girl Scouts of MO Heartland

February 2011

- 12 **Kid's Summer Discovery Expo**
9am-6pm
FREE Admission
Sponsored by Kid's Directory
- 18 **Science Sprouts Day**
9am-6pm
I'm an Engineer!
- 19 **Discovery Science Club***
10am-12pm
Topic: Inventor's Workshop
- 21 **President's Day**
DCS OPEN!
9am-5pm

March 2011

- March Madness Mondays**
Open All Mondays in March 2011
9am-5pm
(March 7, 14, 21, 28)
- 5 **Robot Workshop***
10am-12pm
- 12 **Discovery Science Club***
10am-12pm
Topic: Wild Weather
- 14 **Pi Day**
9am-5pm

April 2011

- 6 **Nano Day**
9am-5pm
- 16 **Earth Day**
9am-6pm
- 23 **DNA Day**
9am-6pm

May 2011

- 5 **Japan's Children's Day**
9am-5pm
- 14 **Robot Workshop***
10am-12pm



Events marked with an "*" indicate pre-registration required.

Coming Soon In 2011...

Building Brains & Bodies!

A Year of Healthy Habits!

Join us for a year long emphasis on building brains and bodies. Good nutrition and physical activities go hand in hand with being a life long learner. Two traveling exhibits will be available throughout this year-long adventure. Check our website often for additional special events, workshops & opportunities throughout the year.

Dates & Topics



01.29.11–05.08.11
Every Body Eats



10.1.11–01.08.12
Let's Get Active

Presented by



- Group rates available for 12+
- Schedule 7 days in advance

For a detailed quote please call Program Facilitator Megan West, 417 862-9910, x726 or email mwest@discoverycenter.org



Field Trips

Enrich Your Field Trip!

HighWire Bike

Explore concepts in physics and simple machines as you pedal your way across the high wire 20 feet above the floor. The 225 pound counter-weight should give you the courage you need: it dangles below the bike to keep you from falling off the wire. Limited to 30 students per hour; height and weight requirements apply. \$2/person, if requested at time of reservation.



30 Minute Field Trip Programs

Choose one of the 30 minute classroom programs listed below. All support the Missouri GLEs, & take place as part of your DCS field trip.

My Amazing Body Introduces bones, muscles, heart, lungs and healthy habits to early learners. (Gr Pre K-2)

Storybook Science Combines the love of reading with fun science experiments. Choose Sound, Chemistry or Water. (Gr Pre K-K)

Magnet Mania Uncover the attractive properties of magnets. (Gr K-3)

Matter Matters Explore fun experiments with dry ice and gak. (Gr Pre K-12)

Ecology Explorations Look into life cycles, food chains and webs, the physical characteristics of animals, and adaptations. (Gr 1-6)

Astronomy Abounds Investigate the characteristics of the planets in our solar system. (Gr K-4)

Chemistry Capers Experiment with physical and chemical changes. (Gr 3-8)

Geography of Culture Explore how aspects of geography influence culture in different regions. Choose from China, Japan, Mexico, Peru, Netherlands, or Lake Chad. (Gr 3-8)

Homes Around the World "Where we live determines how we live." Learn how natural resources around the world inspire a variety of types of homes. (Gr K-2)

Gene Scene Investigate cell biology and DNA using innovative activities from the National Human Genome Research Institute. DNA—see it, build it, touch it. (Gr 6-12)



- \$3/person
- Must schedule in advance

Download reservation form
www.discoverycenter.org

For a detailed quote please call Program Facilitator Megan West, 417 862-9910, x726 or email mwest@discoverycenter.org



Contact Us!

417 862-9910 x726
mwest@discoverycenter.org

(FAX) 417 862-6898
438 E St. Louis, Springfield, MO 65806

NEW Hours & Holidays

Tuesday—Thursday	9am—5pm
Friday—Saturday	9am—6pm
Sunday	1pm—5pm

Closed Mondays, New Year's Day, Easter, Thanksgiving Day, Christmas Eve, Christmas Day & September 6–10

Visit online or in person
discoverycenter.org



Field Trip Policies

- Reservations should be made at least 7 days in advance.
- Field Trips can be reserved during operating hours, Tuesday through Sunday.
- Groups must follow all policies of Discovery Center. This should be communicated to all other teachers and chaperones before arrival.
- There must be at least 12 paid guests in order to qualify for group discounts.
- Groups must have and pay for a 1 to 5 ratio of chaperones. Please make the assignments prior to your arrival and let all chaperones know they must interact and stay with the children while in the Center.
- Chaperones should not bring siblings or other children who are not directly involved with the field trip.
- **Field trips not confirmed by email within 7 days of arrival will be charged the walk-in group rate of \$6/person.**
- Discovery Center memberships and other discounts/coupons/passes do not apply to field trips.
- Students who qualify for the Free Lunch Program are eligible for free admission to Discovery Center (while scholarship funds last). To qualify, you must submit a letter on school letterhead, signed by your principal that states the exact number of children attending that meet this requirement. This letter MUST accompany your registration form. You will be contacted if no funds are available.
- Please have a complete head count upon arrival, as well as all money collected from the children and adults, to expedite entrance to Discovery Center.
- If your group is late, some activities may have to be cancelled without refund.
- Discovery Center has the right to refuse service or ask any group to leave (with no refund) if policies are not followed or if group is destructive.
- Payment in the form of cash, check or credit card is due on the day of your field trip.
- A lunch room with seating for 35 people is available for an additional \$25 for the first seating and \$10 for each additional seating. Use must be requested at time of reservation. Lobby area may not be used for group lunches.

Discovery Center of Springfield
438 East St. Louis Street
Springfield, MO 65806



Great
Minds
at
Play!

discoverycenter.org

417 862-9910

Teacher's Tools

Visit our website to find resources to help improve your field trip experience! You'll find a copy of Environmental Pathways—a self-guided learning tool to help students grades 4 and up discover the wonders of our green building! You'll also find a letter to chaperones, exhibit connections to MO GLEs and more!